

## QSA-10

Pressure die-cast aluminium



## QS-10

Injection-moulded polypropylene



OPTICAL GROUP  
IP65



IK10



ULOR 0,08%  
with 400W  
HPS lamp, at 0°

### Body:

Pressure die-cast aluminium. Access to top team.

### Gear cover:

QSA-10: Pressure die-cast aluminium.

QS-10: Black polypropylene.

### Reflector:

Anodized sealed single-piece aluminium.

### Enclosure:

Curved toughened glass. Lamp access from bottom.

### Mounting:

Type "L" side, diameter 60 x 110 mm.

Type "V" vertical, diameter 60 x 110 mm, tilt 0°, 5°, 10°, and 15°.

### Finishes:

QSA-10: Body and gear cover, beige RAL 1015 paint.

QS-10: Body, beige RAL 1015 paint.

Please enquire for alternative colour options.

### Electrical class:

Class I, for Class II please enquire for price and code.

### Cx:

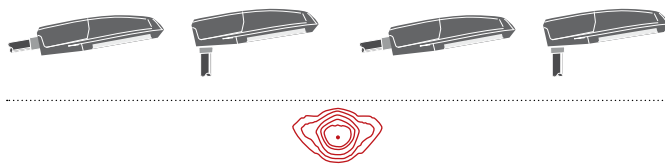
0,604.

### Wind surface:

0,2554 m<sup>2</sup>.



Interior detail



## Control gear (W)

E40

	QSA-10L	QSA-10V	QS-10L	QS-10V
HPS 150 T	<b>1200510</b>	<b>1203510</b>	<b>1030310</b>	<b>1033310</b>
HPS 150 2L T	<b>1200610</b>	<b>1203610</b>	<b>1031110</b>	<b>1034110</b>
HPS 250 T	<b>1200710</b>	<b>1203710</b>	<b>1030410</b>	<b>1033410</b>
HPS 250 2L T	<b>1200810</b>	<b>1203810</b>	<b>1031210</b>	<b>1034210</b>
HPS 400 T	1200910	1203910	1030510	1033510
HPS 400 2L T	1201010	1204010	1031310	1034310
HPS 600 T	1201110	1204110	1030610	1033610
HPS 600 2L T	1201210	1204210	1031410	1034410
MH 150 T	<b>1200511</b>	<b>1203511</b>	<b>1030311</b>	<b>1033311</b>
MH 250 T 3A	1200711	1203711	1030411	1033411
MH 400 T 4,2A	1200911	1203911	1030511	1033511



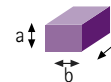
kg without control gear

11,65

11,65

10,8

10,8

a 223  
b 353  
c 832

## Notes:

Codes in bold can be used with electronic control gear; when ordering add an "E" to the end of the code.

Luminaires with MH electronic control gear. Please ask about compatibility and price.

2L control gear with control line; for systems without control line, please enquire.

## Options

Options	Code
"V" attachment for column diameter 76 x 135 mm	QSAACOPL
Grey RAL 7040 finish QSA-10 and QS-10	QSA7040
Other paint colours QSA-10	QSA10RAL
Other paint colours QS-10	QS10RAL
Silver grey RAL 9007 finish QSA-10	QSA109007



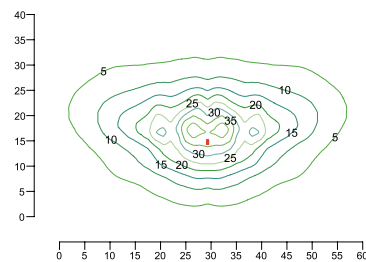
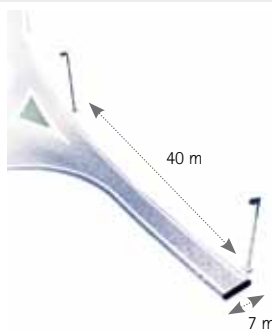
QSA-10L



QS-10V

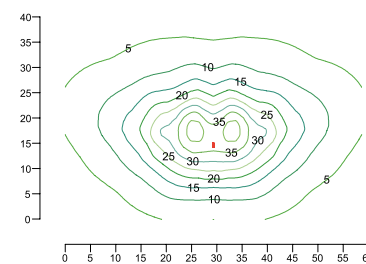
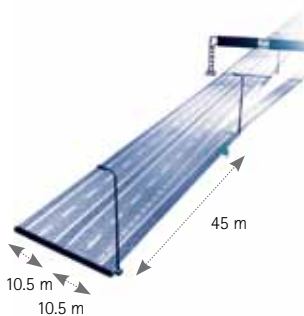
Benefits

- Separate optical and control gear housings for a lower temperature in each and longer life of lamp and control gear.
- Very aptly sized and may be used with lamps of up to 600W. Includes pressure balancing valve-filter.
- Ideal for high-temperature zones.
- Photometry for roads with high-density traffic.



QSA-10 / QS-10

HPS 250W  
 h=12m  
 Lmed = 1.5 cd/m<sup>2</sup>  
 U<sub>0</sub> = 0.60  
 U<sub>long</sub> = 0.85  
 TI = 9.4%  
 ULOR = 0.29%



QSA-10 / QS-10

HPS 400W  
 h=14m  
 Lmed = 2 cd/m<sup>2</sup>  
 U<sub>0</sub> = 0.73  
 U<sub>long</sub> = 0.85  
 TI = 10%  
 ULOR = 0.58%

Streets, avenues, side streets.  
Roads, motorways and dual carriageways.  
Outdoor areas.

