



TLFL300 luminaires combine energy saving efficiency of H.I.D sources with the styling required for application such as sports lighting, parks, parking lots and airport terminal.

TECHNICAL INFORMATION:

Body: Die cast aluminum alloy (UNI5076) with epoxy powder coating.

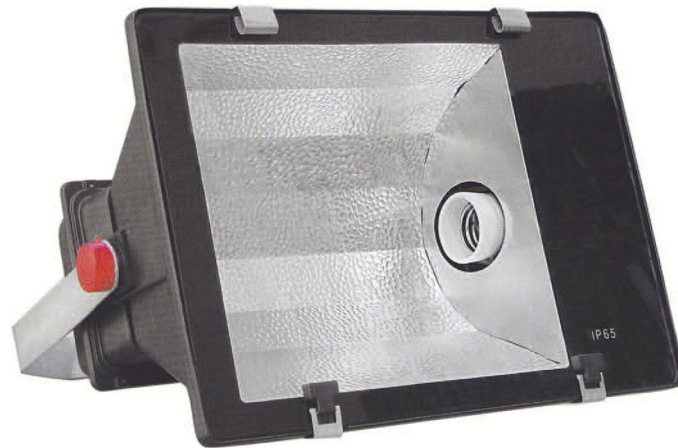
Reflector: High purity aluminum sheet (UNI 9001/4) anodized and polished.

Closure: Tempered front glass, thermal shock resistant

Lamp Holder: E40 screw socket type.

APPLICATION:

- Parking areas
- Docks
- Advertisement billboard



COLOURS



Surface Area: 0.142 m²

Accessories



Protection Grid



Steel Screen



Deflector Screen

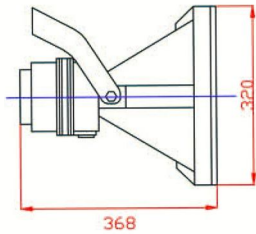
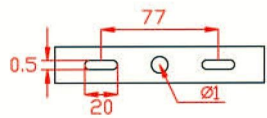
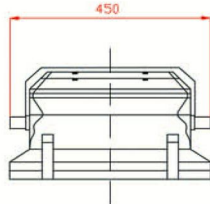
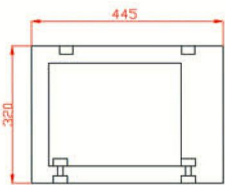
INSTALLATION:

Direct mounting of light with bracket.

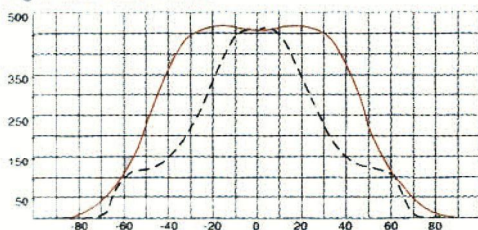
MAINTENANCE:

Direct access to lamp by opening 2 toggle clamps.

Control gear access by opening rear box



Light distribution curve



Code	Lamp Type	Wattage	Lamp Type	IP Rating	Gross Weight
3002	E40	70W	M H	IP65	8.2
3003	E40	150W	M H	IP65	9.0
3006	E40	250W	M H	IP65	10.5
3009	E40	400W	M H	IP65	11.5
30012	E40	70W	HPS	IP65	8.2
30013	E40	150W	HPS	IP65	9.0
30016	E40	250W	HPS	IP65	10.5
30017	E40	400W	HPS	IP65	11.6